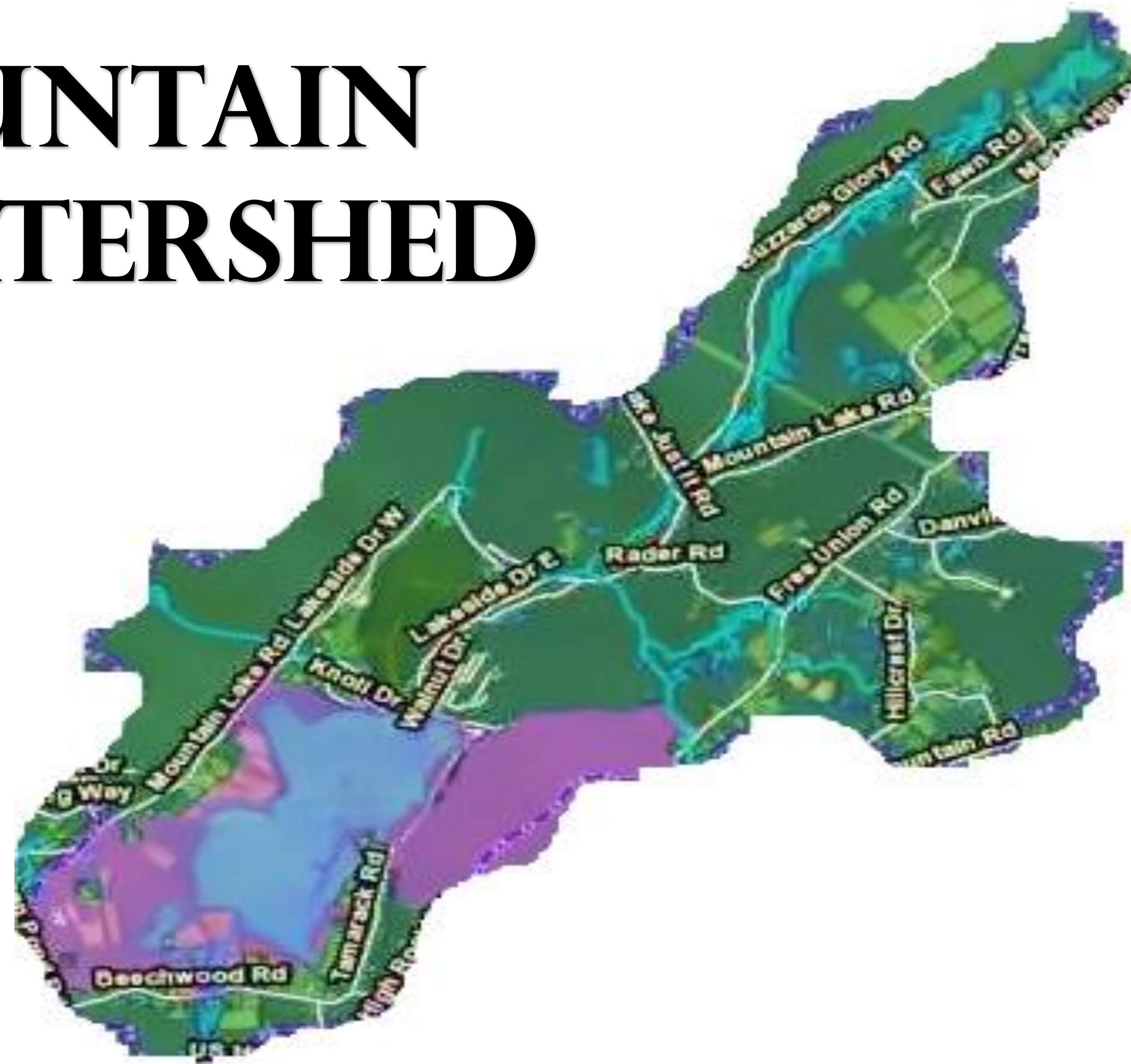


THE MOUNTAIN LAKE WATERSHED



- **What is a watershed?** It's an area of land where all of the water that is under it or drains off of it goes into the same place
- Mt. Lake watershed is a 3,625 acre area completely located within Liberty Twp. and a sub-watershed within the Pequest and Upper Delaware watersheds.
- Main inlets to the lake are the Mountain Lake Brook, Jenny Jump Brook and three unnamed streams.
- Mountain Lake is a trophy Muskee lake.
- Mountain Lake is a spring fed lake, one of the least common types of lakes in NJ. Spring fed lakes typically have clearer water and are less susceptible to low water levels during droughts.
- Non-Point Source pollution is one of the biggest issues compromising our water quality. Non-point source pollution, or people pollution, is a contamination of groundwater and waterways from everyday activities, such as fertilizing lawns, not picking up after our pets, and littering.

Stewardship Tip: Reduce Non Point Source Pollution by following local ordinances in Liberty Twp:

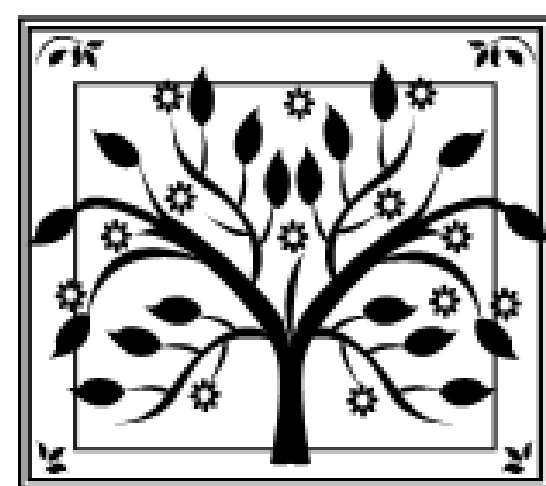
- No gas powered motors permitted on lake
- No feeding waterfowl
- No phosphorus based fertilizers permitted on residential lawns, except newly established turf
- Clean-up and properly dispose of pet waste

Violators are subject to fines of not less than \$5 or more than \$500.



Explore your Watershed!

Recreational opportunities abound . There is walking, hiking, biking, swimming, sailing, boating, fishing, skating and cross country skiing. Jenny Jump State Park has accessible trails at the north end of the lake. Lakeside Drive, a two and a half mile roadway, encircles the lake. Exceptional birding opportunities!



**New Jersey
Youth Corps**
of Phillipsburg

This sign was created through the Mountain Lake Stewardship Education Project and funding from ANJEC. Thank you to our partners – Liberty Environmental Commission, Association for New Jersey Environmental Commissions (ANJEC), NJ Youth Corps of Phillipsburg and Mt. Lake Community Association & Watershed Advisory Group (MLCA & WAG)

